

Retail CRU Units

Unit #104 - 1,181 SF +/-

Occupancy May 1, 2026

Starbucks anchored retail centre.
Excellent exposure to Hwy 1 and 13th Ave SE.
Ideal for QSR or medical uses.
Previously licensed dining.



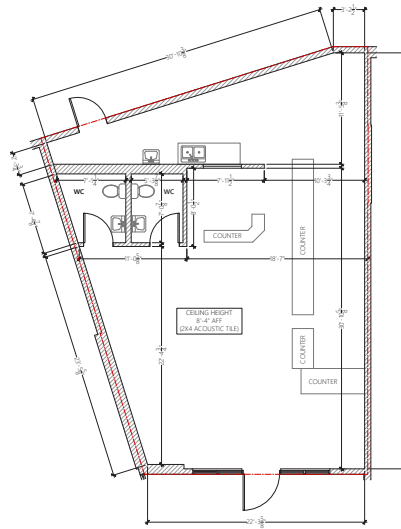
- 1290 Trans Canada Way SE
Medicine Hat, AB
- Legal Description:
Plan 9711129 Blk 2 Lot 6
- Zoning: Highway Commercial
- Site Size: 1.66 +/- Acres
- Lease Rate: Market
- Op Costs: \$9.95/sf (2026)



FOR LEASE

Unit #104, 1290 Trans Canada Way SE
Medicine Hat, AB

Existing Floor Plan – Will Build To Suit



Great
QSR Space

Location



KDI
COMMERCIAL

REAL ESTATE SERVICES
kdicommercial.com

Daniel Goldstrom,
Senior Associate, Partner, Director
Cell: 403.809.8326
dgoldstrom@kdicommercial.com

Steve Seiler,
Senior Associate, Partner, Director
Cell: 403.818.9837
sseiler@kdicommercial.com

This brochure is intended for information purposes only and should not be relied upon for accurate factual information by the recipients hereof. The information contained herein is based on information which KDI Commercial Inc. deems reliable. However KDI Commercial Inc. assumes no responsibility for the degree of accuracy of such information, nor does KDI Commercial Inc. represent or warrant the information contained herein. Recipients hereof should conduct their own investigation to determine the accuracy of information contained herein. The information contained herein is subject to change without notice. All rights reserved. No reproduction, distribution, or transmission of the copyright materials at this site is permitted without the written permission of KDI Commercial Inc. unless otherwise specified.