

# KDI

COMMERCIAL


REAL ESTATE SERVICES

# For Lease

Neighbourhood Commercial  
1,500 SF - 3,000 SF +/-

**1 Crestview Boulevard**  
Sylvan Lake, AB



Suite 250, 4723 1st Street SW, Calgary, AB  [kdicommercial.com](http://kdicommercial.com)

Daniel Goldstrom, Partner  
403.809.8326  
[dgoldstrom@kdicommercial.com](mailto:dgoldstrom@kdicommercial.com)

Steve Seiler, Senior Associate  
403.818.9837  
[sseiler@kdicommercial.com](mailto:sseiler@kdicommercial.com)

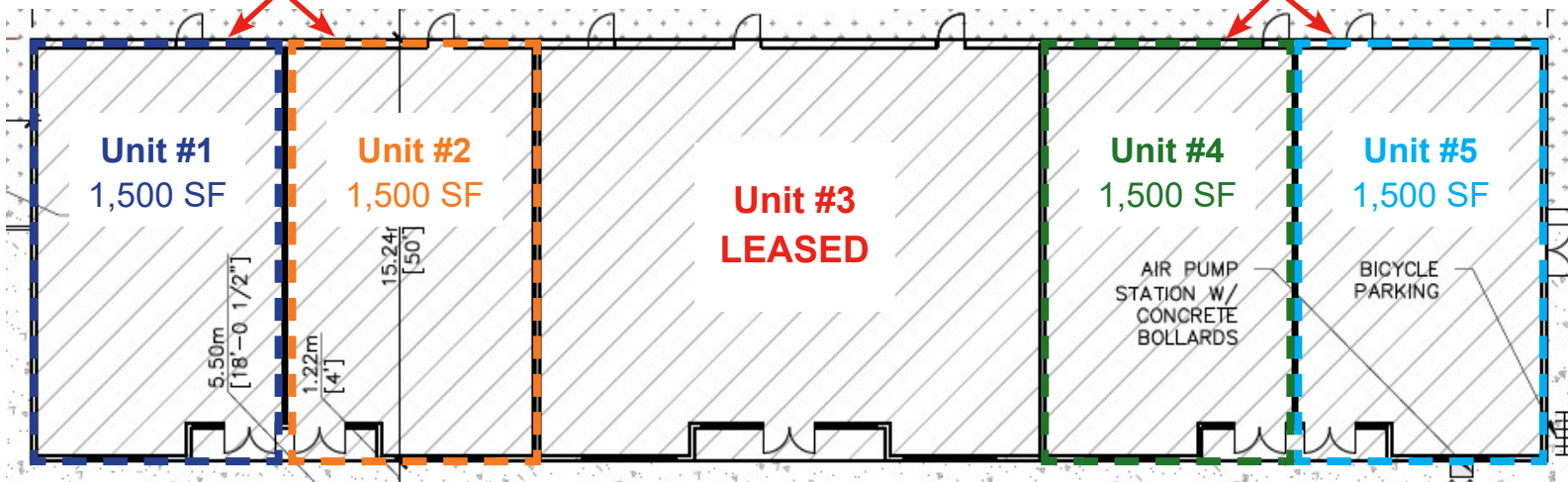
# For Lease

1 Crestview Boulevard  
Sylvan Lake, AB

## Floor Plan

Can Be Combined  
for 3,000 SF

Can Be Combined  
for 3,000 SF



## Property Highlights

Neighbourhood Commercial

Corner Exposure in Residential Development

Retail Bays Ideal for Medical, Liquor Store,  
Restaurant, Day Care, Pet Store

Op Costs: TBV

## Property Details

Address: 1 Crestview Boulevard, Sylvan Lake

Legal Description: Plan 1424556, Block 6, Lot 1

Zoning: CN (Commercial Neighbourhood)

Lease Rate: Market

Suite 250, 4723 1st Street SW, Calgary, AB  [kdicommercial.com](http://kdicommercial.com)

**KDI**  
COMMERCIAL

REAL ESTATE SERVICES

[kdicommercial.com](http://kdicommercial.com)

Daniel Goldstrom, Partner  
403.809.8326  
[dgoldstrom@kdicommercial.com](mailto:dgoldstrom@kdicommercial.com)

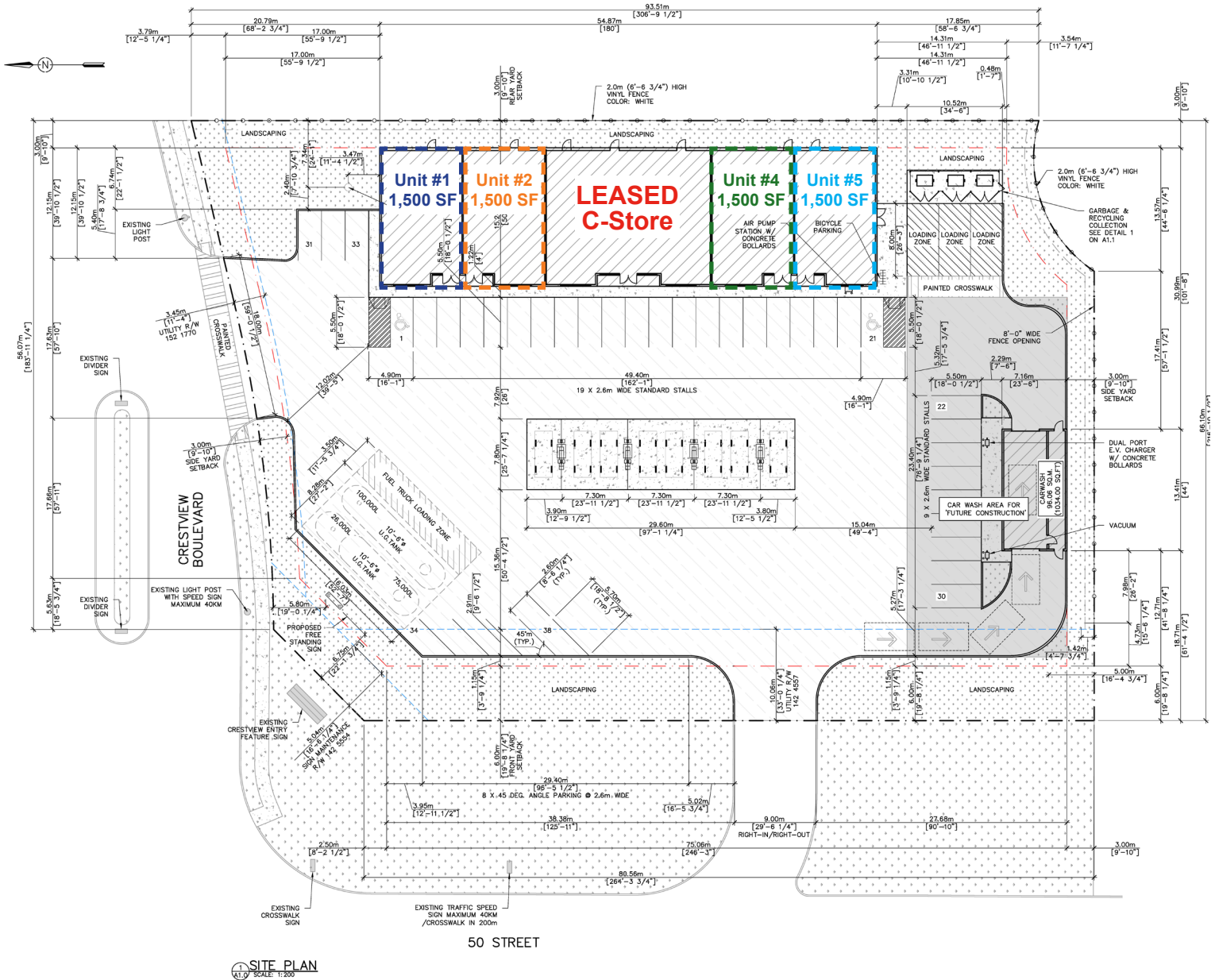
Steve Seiler, Senior Associate  
403.818.9837  
[sseiler@kdicommercial.com](mailto:sseiler@kdicommercial.com)

This brochure is intended for information purposes only and should not be relied upon for accurate factual information by the recipients hereof. The information contained herein is based on information which KDI Commercial Inc. deems reliable. However KDI Commercial Inc. assumes no responsibility for the degree of accuracy of such information, nor does KDI Commercial Inc. represent or warrant the information contained herein. Recipients hereof should conduct their own investigation to determine the accuracy of information contained herein. The information contained herein is subject to change without notice. All rights reserved. No reproduction, distribution, or transmission of the copyright materials at this site is permitted without the written permission of KDI Commercial Inc. unless otherwise specified.

# For Lease

# 1 Crestview Boulevard Sylvan Lake, AB

## Site Plan



Suite 250, 4723 1st Street SW, Calgary, AB  [kdicommercial.com](http://kdicommercial.com)

**KDI**  
COMMERCIAL

REAL ESTATE SERVICES

[kdicommercial.com](http://kdicommercial.com)

Daniel Goldstrom, Partner  
403.809.8326  
[dgoldstrom@kdicommercial.com](mailto:dgoldstrom@kdicommercial.com)

Steve Seiler, Senior Associate  
403.818.9837  
[sseiler@kdicommercial.com](mailto:sseiler@kdicommercial.com)

This brochure is intended for information purposes only and should not be relied upon for accurate factual information by the recipients hereof. The information contained herein is based on information which KDI Commercial Inc. deems reliable. However KDI Commercial Inc. assumes no responsibility for the degree of accuracy of such information, nor does KDI Commercial Inc. represent or warrant the information contained herein. Recipients hereof should conduct their own investigation to determine the accuracy of information contained herein. The information contained herein is subject to change without notice. All rights reserved. No reproduction, distribution, or transmission of the copyright materials at this site is permitted without the written permission of KDI Commercial Inc. unless otherwise specified.